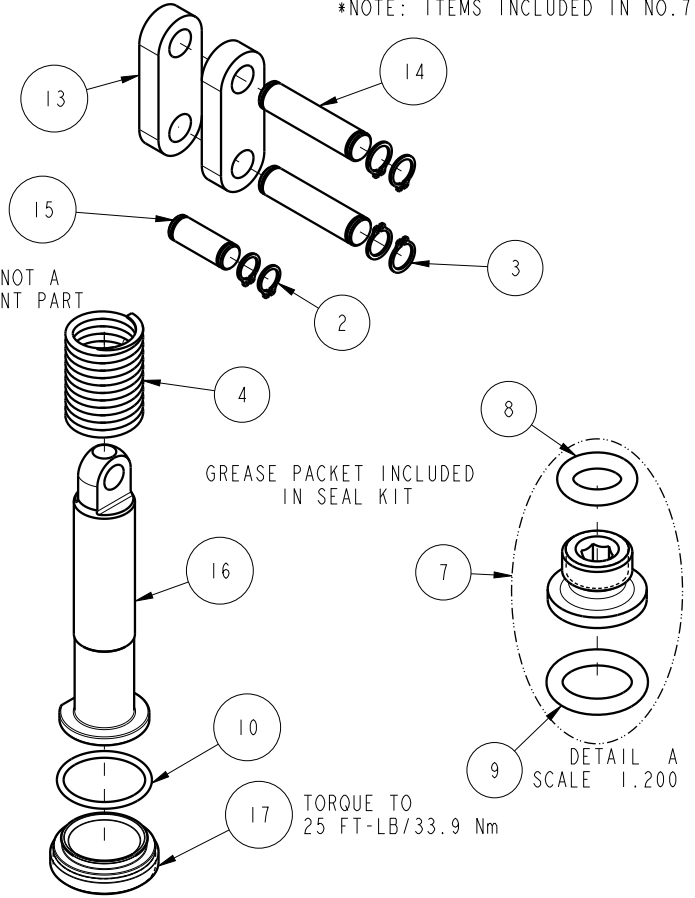
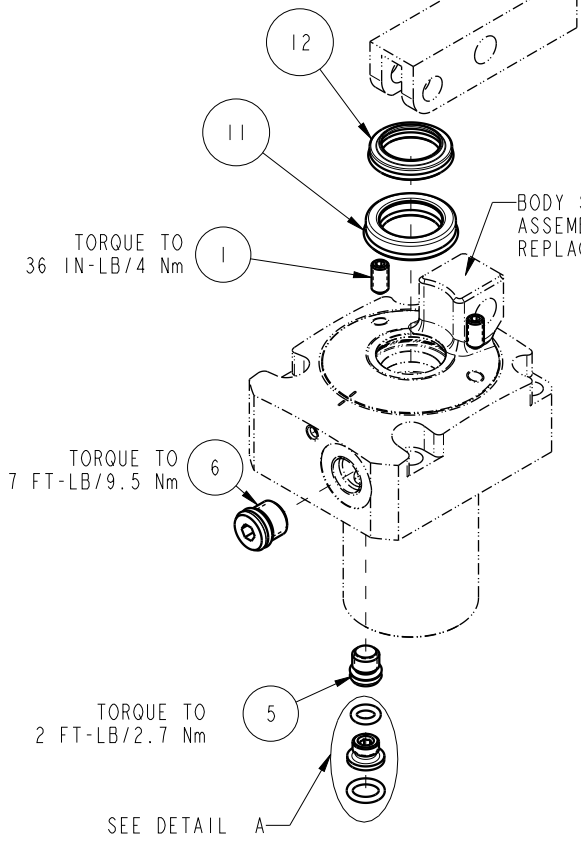


NO	QTY	PART NO	DESCRIPTION	STD SEAL KIT
1	2	21500318	SCREW, SET, CUP PT, M5 X .8 X 10	
2	2	23050034	RING, RTNG, EXT, 0.312	X
3	4	23050035	RING, RTNG, EXT, 0.354	X
4	1	23350130	SPRING, COMPRESSION	
5	1	30601122	PLUG, SOCH, SAE 2	
6	1	30601144	PLUG, SOCH, SAE 4	
7	1	30871120	ASSY, ADAPTER, SC, TF, MM	X
8	1	39050036	O-RING, (-009)	X*
9	1	39050042	O-RING, (-011)	X*
10	1	39051150	O-RING, (24mm X 2)	X
11	1	39052066	SEAL, ROD, RSB, 18, 85A, AU	X
12	1	39053042	SEAL, WIPER, SNAP IN, WED, 18, 94A, AU	X
13	2	81600147	LINK, LC, 7MP α , 40B	
14	2	81600152	PIN, LINK, LC, 7MP α , 40B	
15	1	81600157	PIN, PLUNGER, LC, 7MP α , 40B	
16	1	81600262	PLUNGER, LC, TL360, SA, 1400/6.22kN	
17	1	81600272	CAP, LC, TL360, 1400/6.22kN	
N/A	N/A	60160102	KIT, SEAL, ASSY, LC, TL360, SA, 14001b	NOTED

*NOTE: ITEMS INCLUDED IN NO. 7



PARTS LIST	
	VEKTEK, INC. 1334 E. SIXTH AVE. P.O. BOX 625 EMPORIA, KS. 66801 U.S.A.
ASSEMBLIES AFFECTED 16-3118-00	PARTS LIST, ASSY, LC, TL360, SA, 14001b
	ROTARY LUG
SIZE A	PL1616
	REV C

C	5124	RELEASE	ALS	7/12/23
REV	IN ACCORDANCE WITH ECN	EFFECTIVE DATE	REVISED BY	DATE
DRW BY: BCD	DRAWING STATUS: Released PRODUCTION APPROVED FOR RELEASED STATUS ONLY			
DATE: 07/20/16				